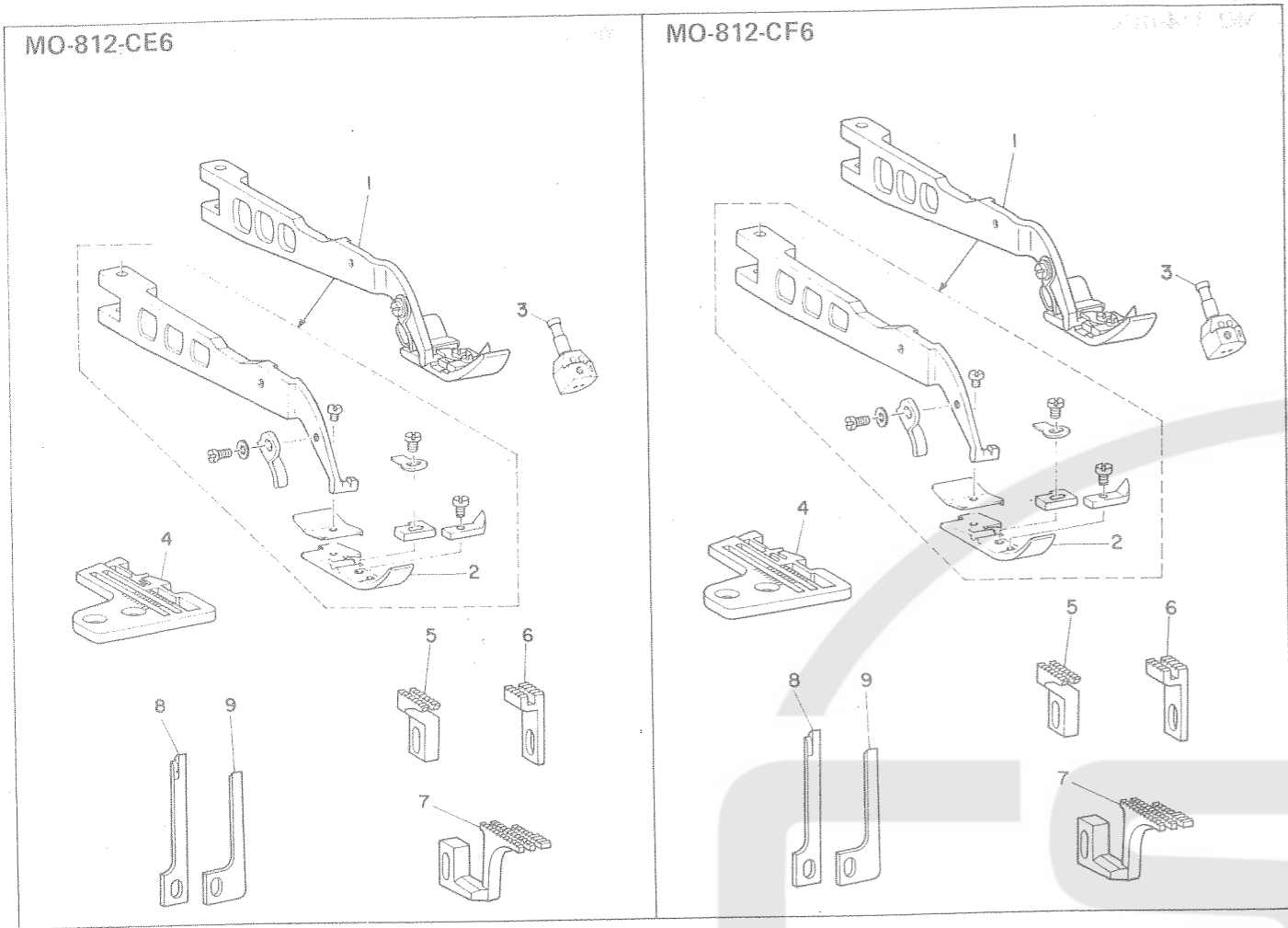


DOUBLE NEEDLE OVERLOCK MACHINE

サブクラス二本針オーバーロックミシン



12. MO-812-CE6

Ref. No.	Note	Part No.	Description	E.C. 変更年月	品名	Amt. Req. 数量
1	注記	B1507-814-BAG	Presser foot asm.		押エ結合	1
2		B1507-814-00G	Presser foot		押エ	(1)
3		B1420-712-C0B	Double needle needle clamp		二本針針留	1
4		R4306-E0E-E00	Throat plate		針板	1
5		B1656-812-D0C	Main feed dog		主送り歯	1
6		B1658-812-00A	Auxiliary feed dog		補助送り歯	1
7		B1657-812-D0A	Differential feed dog		副送り歯	1
8		B4121-814-C0A	Needle guard (A)		針受 (A)	1
9		B4120-814-C0A	Needle guard (B)		針受 (B)	1

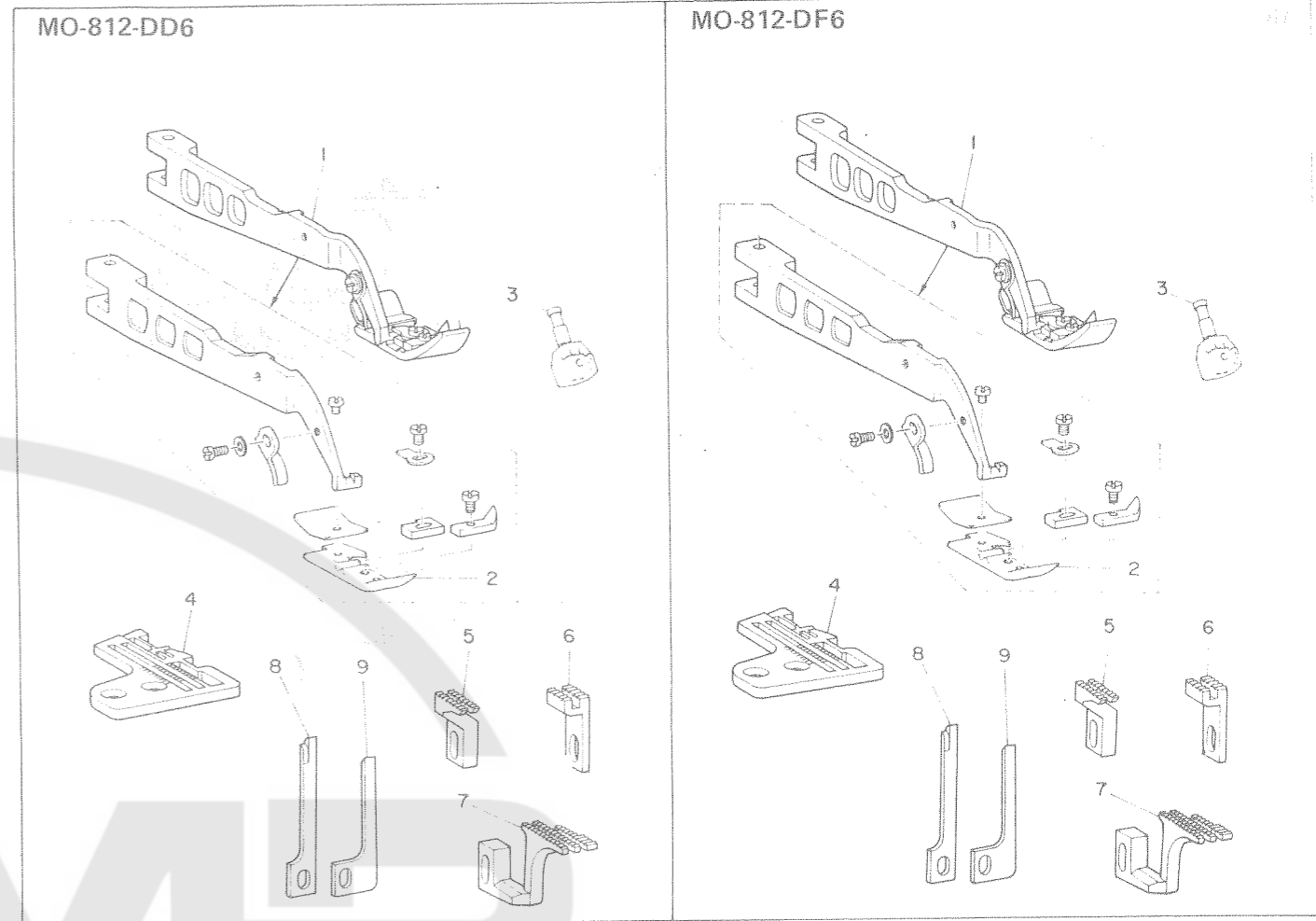
13. MO-812-CF6

Ref. No.	Note	Part No.	Description	E.C. 変更年月	品名	Amt. Req. 数量
1		B1507-814-BAG	Presser foot asm.		押エ結合	1
2		B1507-814-00G	Presser foot		押エ	(1)
3		B1420-712-C0B	Double needle needle clamp		二本針針留	1
4		R4306-E0F-E00	Throat plate		針板	1
5		B1656-812-D0C	Main feed dog		主送り歯	1
6		B1658-812-00A	Auxiliary feed dog		補助送り歯	1
7		B1657-812-D0A	Differential feed dog		副送り歯	1
8		B4121-814-C0A	Needle guard (A)		針受 (A)	1
9		B4120-814-C0A	Needle guard (B)		針受 (B)	1

* All parts not mentioned above are same as those of Model MO-814-BD4. 上記以外の部品はMO-814-BD4と共通です。

DOUBLE NEEDLE OVERLOCK MACHINE

サブクラス二本針オーバーロックミシン



14. MO-812-DD6

Ref. No.	Note	Part No.	Description	E.C. 変更年月	品名	Amt. Req. 数量
1		B1507-812-DAC	Presser foot asm.		押エ結合	1
2		B1507-812-D0C	Presser foot		押エ	(1)
3		B1420-712-D00	Double needle needle clamp		二本針針留	1
4		R4308-E0D-E00	Throat plate		針板	1
5		B1656-812-D0C	Main feed dog		主送り歯	1
6		B1658-812-00A	Auxiliary feed dog		補助送り歯	1
7		B1657-812-D0A	Differential feed dog		副送り歯	1
8		B4121-812-00J	Needle guard (J)		針受 (J)	1
9		B4120-812-00H	Needle guard (H)		針受 (H)	1

15. MO-812-DF6

Ref. No.	Note	Part No.	Description	E.C. 変更年月	品名	Amt. Req. 数量
1		B1507-812-DAC	Presser foot asm.		押エ結合	1
2		B1507-812-D0C	Presser foot		押エ	(1)
3		B1420-712-D00	Double needle needle clamp		二本針針留	1
4		R4308-E0F-E00	Throat plate		針板	1
5		B1656-812-D0C	Main feed dog		主送り歯	1
6		B1658-812-00A	Auxiliary feed dog		補助送り歯	1
7		B1657-812-D0A	Differential feed dog		副送り歯	1
8		B4121-812-00J	Needle guard (J)		針受 (J)	1
9		B4120-812-00H	Needle guard (H)		針受 (H)	1

* All parts not mentioned above are same as those of Model MO-814-BD4. 上記以外の部品はMO-814-BD4と共通です。